

How to upgrade FrSky Smart Port (S.Port) enabled products



Introduction

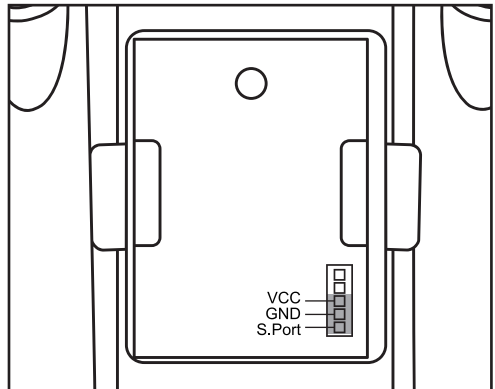
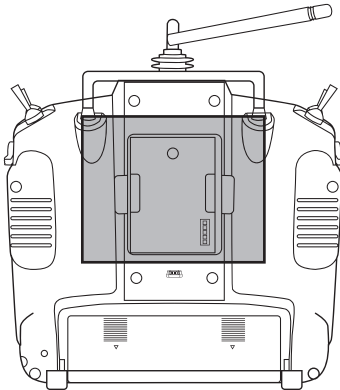
FrSky X series modules and receivers, as well as new generation sensors are featured by Smart Port (S.Port). All these products could be firmware upgraded through Smart Port easily.

Upgrade by Radios

Step 1: Download the firmware of FrSky S.Port product and save it into "FIRMWARES" folder of MicroSD Card in radios.

Step 2: Connect S.Port of products to the radios (Taranis X9DP/X9E/Q X7/HORUS X12S .etc.).

Please pay attention to the pins definition in the external module bay:



Please find out the smart port of the devices you want to upgrade referring to their manuals.

Note: For XM/XM+/XMPF3E, the SBUS port will act as a S.Port when in upgrading mode.
For XJT module, just insert it in external module bay.

Step 3: For X9DP/X9E/ Q X7, select the firmware you need and long press on the ENT button of the radio and choosing "Flash External Device to update".

Waiting with "writing" messages in LCD until complete.



For Horus X12S, select firmware you need in UPDATE page, click on UPDATE button and wait for success.

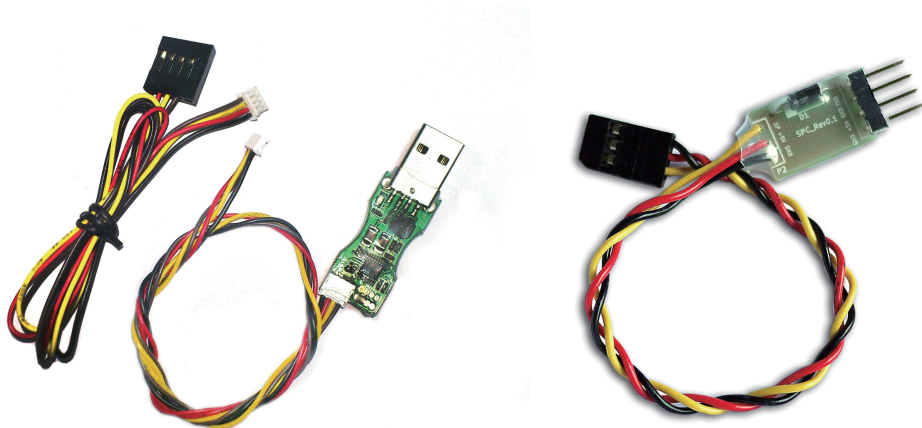


Upgrade by Computer

FrSky X series modules and receivers, as well as new generation sensors are featured by Smart Port (S.Port). All these products could be firmware upgraded through Smart Port easily.

Tools needed

1. FrSky FrUSB-3/FUC-3 (FrSky Upgrade Cable)
2. SPC (FrSky Smart Port Converter)

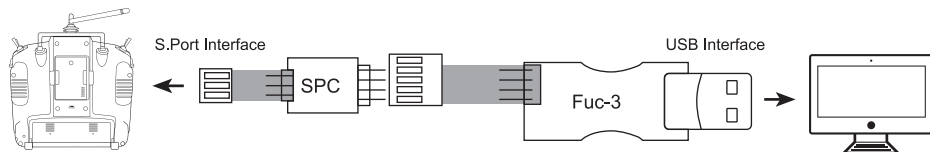


3. Driver for XP or Win7/Vista and above: FrSky website www.frsky-rc.com – DOWNLOAD - Driver for XP or Driver for Win7 and Vista and above.
4. Upgrade ROM: FrSky website www.frsky-rc.com – PRODUCTS – category – required product – Download – Related Software

Steps

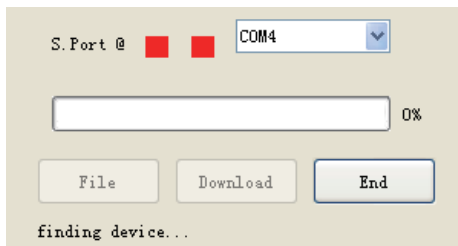
Step 1: Go to FrSky website www.frsky-rc.com, Download section, download and install the driver for XP or Win7/Vista and above.

Step 2: Connect SPC to FrUSB-3/FUC-3 as shown below, and then plug FUC-3 into a USB port on the PC.



Note: GND pin on SPC goes to BLACK wire of FrUSB-3/FUC-3 to make sure the connection is correct.

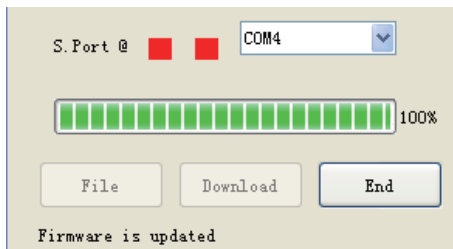
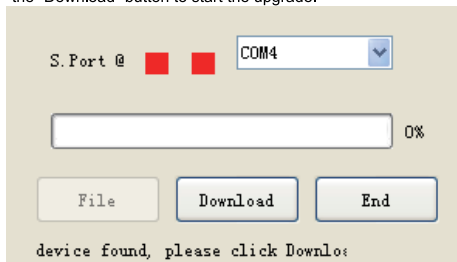
Step 3: Run "frsky_update_Sport.exe" program. Match the COM port number to the one assigned by computer. Click "File" button and select ROM Version.



Step 4: Plug the S.PORT Interface of SPC to the Smart Port on S.Port products. (For XJT upgrade, you could place the Switch 1 and Switch 2 in either position).

Step 5: After "device found, please click Download", then click the "Download" button to start the upgrade.

Step 6: Exit the process by clicking "END" button after "Firmware is updated".



Troubleshooting

- No COM port number shown in step 3: driver installed failure, please re-install the driver
- No "device found" in step 5: re-start the process from the beginning.